

D210-11KS

User Manual (Version 1.0)

Introduction

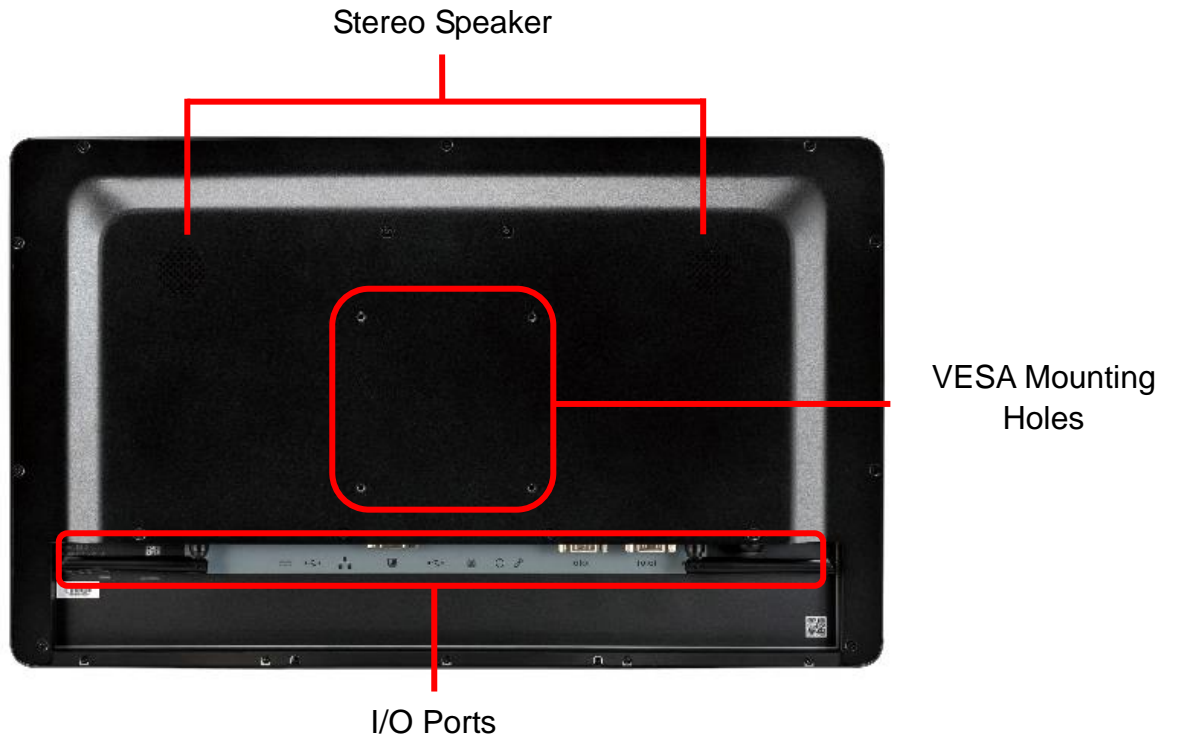
D210 series are 21.5" ultra-thin and wide-screen fan-less Panel PC. D210-11KS is powered by Intel 7th core i ULV processor and up to 32GB DDR4 memory. The distinct aluminum extrusion frame with matte black or silver finish gives the system an understated luxury and elegant look. The series also featuring a bright TFT-LCD with LED backlight display and true flat 10-point projective capacitive multi-touch front panel that's IP65 compliant, along with optional universal snap-in peripherals (MSR, Smart card reader, NFC/ RFID reader, barcode scanner, camera), making it perfect for diversified self-service and interactive signage markets including retail, hospitality, gaming, corporate, healthcare and light industrial applications.

Front View

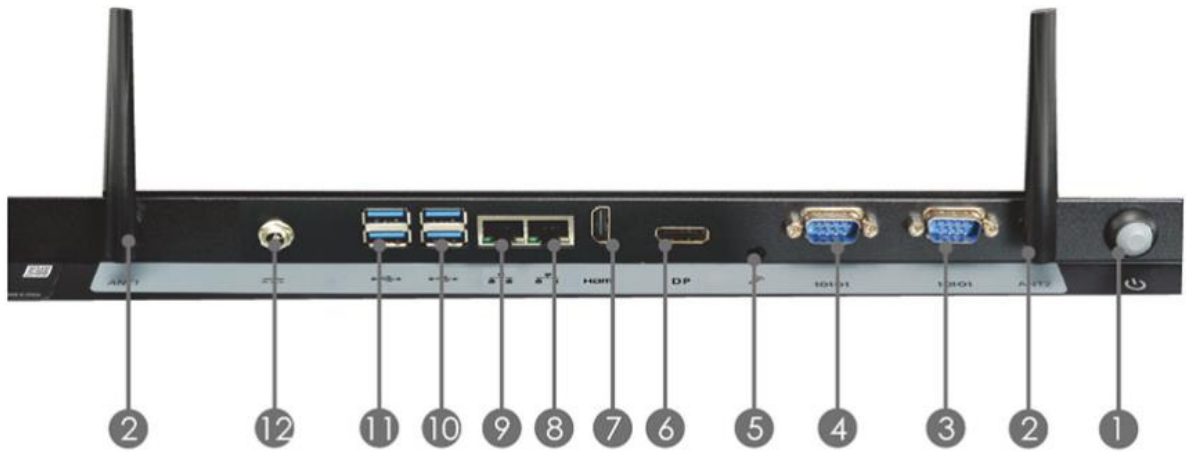


21.5 inch TFT LCD with PCAP touch screen

Rear View



Bottom View



- | | | |
|-----------|---------------|------------|
| ① Power | ⑤ Audio Jack | ⑨ Giga LAN |
| ② Antenna | ⑥ DisplayPort | ⑩ USB 3.0 |
| ③ COM | ⑦ HDMI | ⑪ USB 3.0 |
| ④ COM | ⑧ Giga LAN | ⑫ DC input |

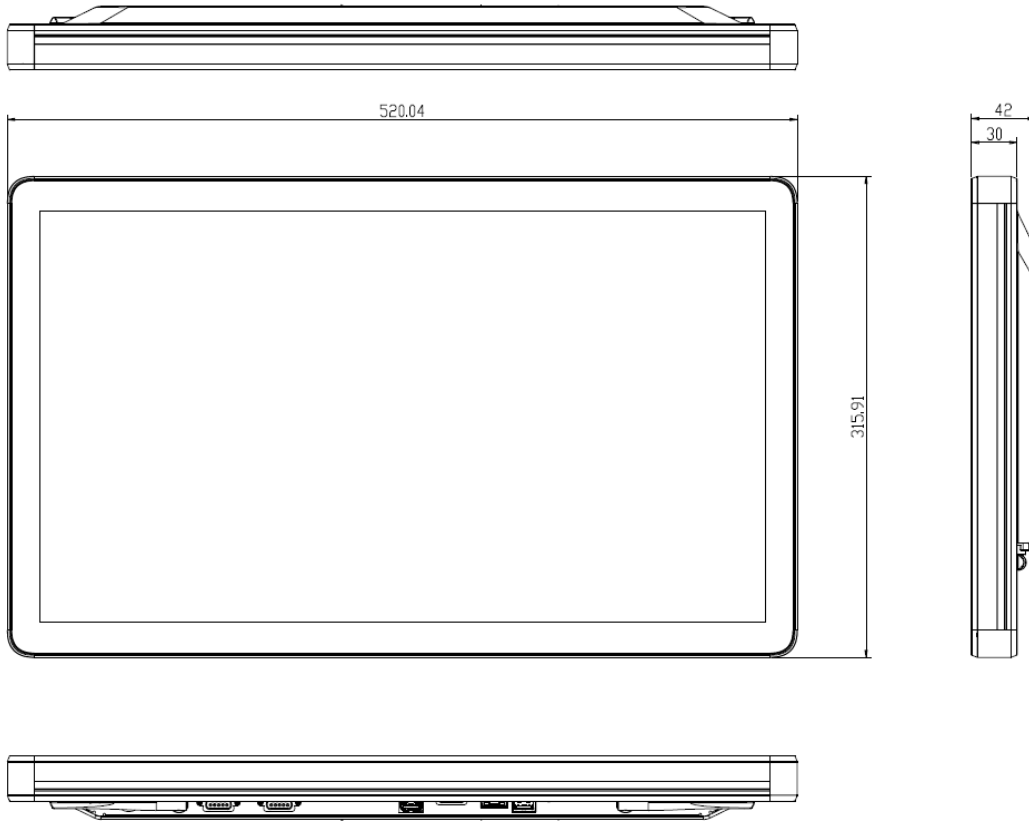
Side View



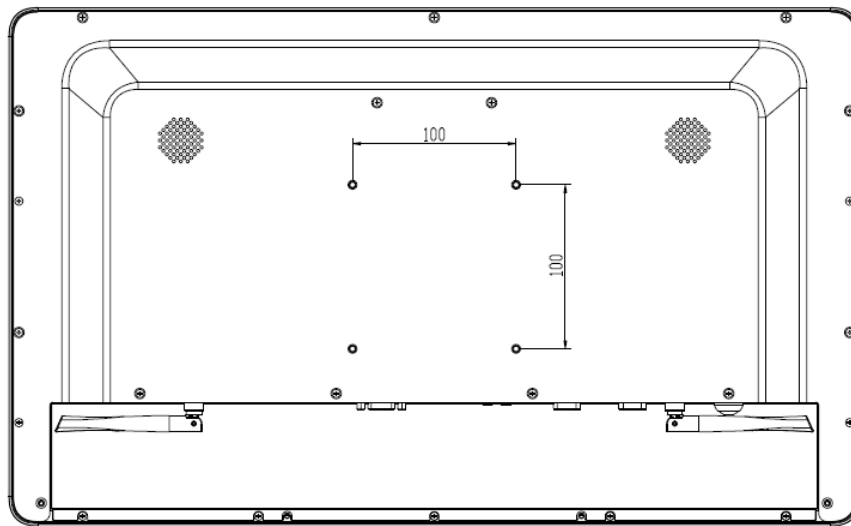
Groove design for optional modules

Mechanical Dimension

D210-11KS dimension: 520 x 315 x 42 mm



VESA mounting: 100 x 100 mm



Product Specifications

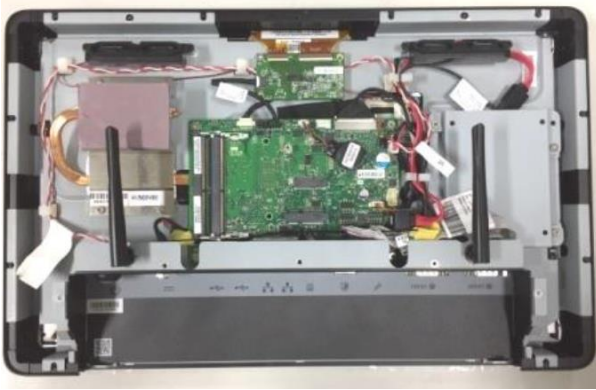
Model Name	D210-11KS
Motherboard	PD11KS
Processor	7th Gen Intel® Kaby Lake-U i3-7100U(Dual Core, 3MB Cache, 2.40 GHz) / option: 7th Gen Kaby Lake celeron 3965U / i5-7300U / i7-7600U / option: 6th Gen Skylake celeron 3955U / i3-6100U / i5-6300U / i7-6600U
System Memory	DDR4 2133 / 2400MHz / 2 x 260-pin SO-DIMM / Max. 32GB (Non-ECC)
Processor Graphic	intel® SoC Integrated
Touch Display	
LCD Size	21.5" TFT LCD with LED Backlight
Brightness	250 nits
Resolution	1920 x 1080
Viewing Angle	178°/178°
Touch Screen	True-flat 10 points projective capacitive
Storage	
HDD/SSD	1 x 2.5 internal HDD/SSD bay
Expansion	
mPCIe	1 x full-length slot (PCIe/SATA/USB signal)
M.2 E key	1 x M.2 2230 E key (PCIe, USB 2.0)
I/O Ports	
DC Jack	1 (8 V to 24 V wide-range voltage input)
USB3.0	4
GigaLAN (10/100/1000)	2
DisplayPort	1
HDMI-out	1
Audio Jack (combo Line-out + Mic-in)	1
Serial Port	1 x RS-232/422/485, 1 x RS232

Thermal Solution	
Thermal Solution	Fanless
Audio	
Stereo Speaker	3W x 2
Power	
Power Supply	65W/19V
Certification	
EMC & Safety	CE/FCC Class A
Environment	
Operating Temperature	0°C ~ 40°C (32°F~104°F)
Storage Temperature	-20°C ~ 60°C(-4°F~140°F)
Relative Humidity	10%~95% @40°C non-condensing
Front Panel Protection	IP65 Compliant
Dimension	520 x 315 x 42 (mm)
Weight	10 kg (22.04 lb)
Mounting	100 x 100 mm VESA
OS Support	Win 10 IoT Enterprise 64-bit
	Ubuntu, Android by project request

Quick Installation Guide



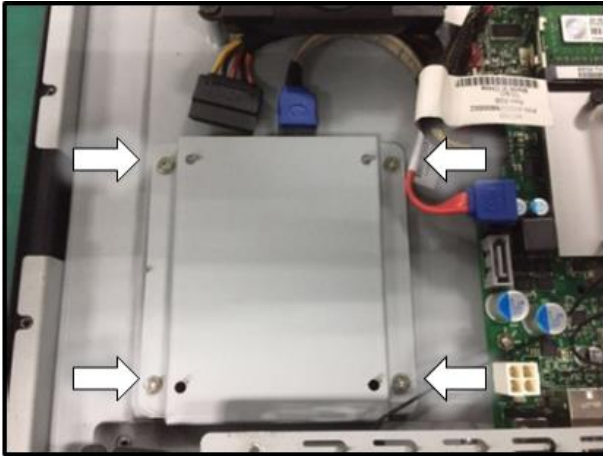
Remove cover screws
(Torque 3.5 +/-0.5 Kgf-cm)



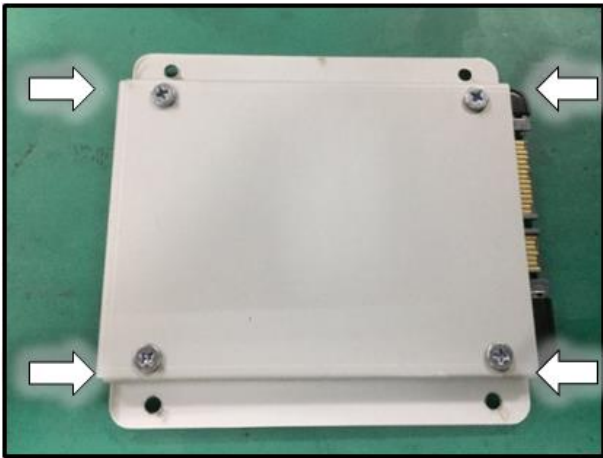
Open the cover



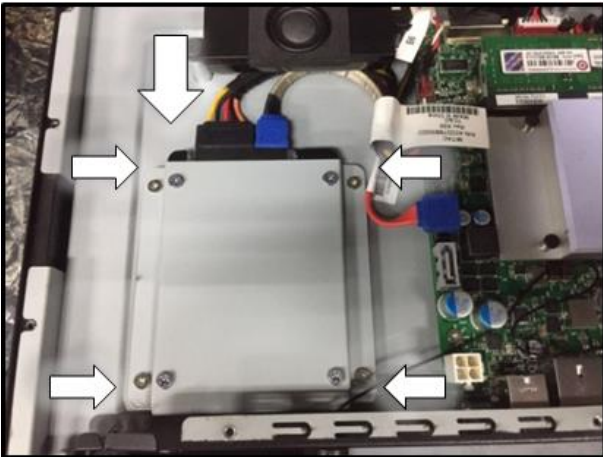
Install DIMMs



Disassemble the HDD bracket
(Torque 5.5 +/-0.5 Kgf-cm)



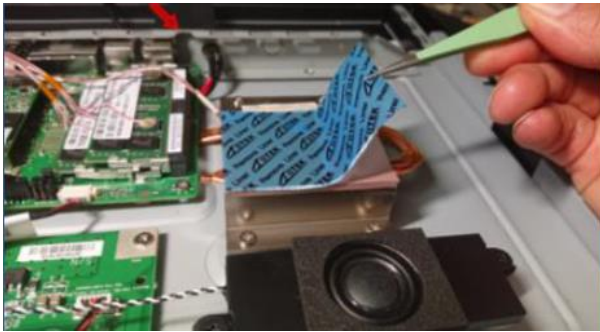
Install HDD
(Torque 5.5 +/-0.5 Kgf-cm)



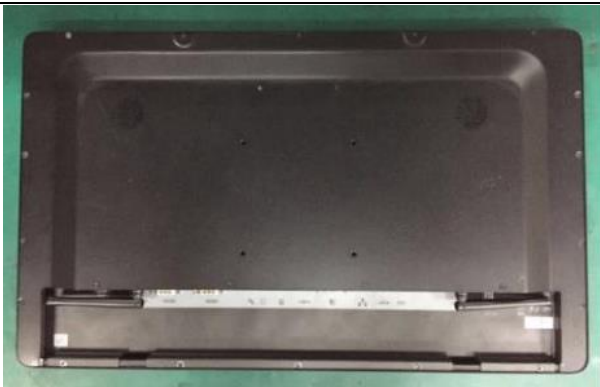
Install HDD bracket and connect
the SATA cable
(Torque 5.5 +/-0.5 Kgf-cm)



Install wifi card and connect antennas
(Torque 2 +/- 0.2 Kgf-cm)



Remove the protection of thermal pad release paper before the assembly of Rear Cover



Secure Cover Screws
(Torque 3.5 +/-0.5 Kgf-cm)

BIOS Information

Value	Display the installed CPU brand.
Comment	This field is not selectable. There is no help text associated with it.

Field Name	Total Memory
Value	Display the installed memory size.
Comment	This field is not selectable. There is no help text associated with it.

Field Name	Memory Frequency
Value	Display the installed memory frequency.
Comment	This field is not selectable. There is no help text associated with it.

Field Name	SATA1
Value	Display the installed SATA port device.
Comment	This field is not selectable. There is no help text associated with it.

Field Name	MSATA
Value	Display the installed SATA port device.
Comment	This field is not selectable. There is no help text associated with it.

Field Name	System Date
Default Value	[Www mm/dd/yyyy]
Possible Value	Www : Mon/Tue/Wed/Thu/Fri/Sat/Sun mm : 1-12 dd : 1-31 yyyy : 1998-9999
Help	Set the Date. Use Tab to switch between Date elements.

Field Name	System Time
Default Value	[hh :mm :ss]
Possible Value	hh : 0-23 mm : 0-59 ss : 0-59
Help	Set the Time. Use Tab to switch between Time elements.

2. ADVANCED PAGE

Main	Advanced	Chipset	Security	Boot	Save & Exit
<ul style="list-style-type: none"> ▶ CPU Configuration ▶ Trusted Computing ▶ ACPI Settings ▶ SMART Settings ▶ Super IO Configuration ▶ Hardware Monitor ▶ S5 RTC Wake Settings ▶ Network Stack Configuration 					<p style="text-align: center;">Item help</p> <p>→←: Select Screen ↑↓: Select Item Enter: Select +/- : Change Opt F1: General Help F2: Previous Values F3: Optimized Defaults F4: Save & Reset ESC: Exit</p>
Version 2.18.1264. Copyright (C) 2017 American Megatrends, Inc.					

Field Name	CPU Configuration
Help	CPU Configuration Parameters.
Comment	Press Enter when selected to go into the associated Sub-Menu.

Field Name	Trusted Computing
Help	Trusted Computing Settings
Comment	Press Enter when selected to go into the associated Sub-Menu.

Field Name	ACPI Settings
Help	System ACPI Parameters.
Comment	Press Enter when selected to go into the associated Sub-Menu.

Field Name	SMART Settings
Help	System SMART Settings.
Comment	Press Enter when selected to go into the associated Sub-Menu.

Field Name	Super IO Configuration
Help	System Super IO Chip Parameters.
Comment	Press Enter when selected to go into the associated Sub-Menu.

Field Name	Hardware Monitor
Help	Monitor hardware status
Comment	Press Enter when selected to go into the associated Sub-Menu.

Field Name	S5 RTC Wake Settings
Help	Enable system to wake from S5 using RTC alarm.
Comment	Press Enter when selected to go into the associated Sub-Menu.

Field Name	Network Stack Configuration
Help	Network Stack Settings.
Comment	Press Enter when selected to go into the associated Sub-Menu.

2.1 CPU CONFIGURATION

Main	Advanced	Chipset	Security	Boot	Save & Exit
CPU Configuration					Item help
Type	Intel(R) Core(TM) CPU i5-7300U @ 2.60 GHz				
ID	0x806E9				
Speed	2700 MHz				
L1 Data Cache	32 KB x 2				
L1 Code Cache	32 KB x 2				
L2 Cache	256 KB x 2				
L3 Cache	3MB				
L4 Cache	N/A				
VMX	Supported				
SMX/TXT	Supported				
Hardware Prefetcher	[Enabled]				→←: Select Screen
Adjacent Cache Line Prefetch	[Enabled]				↑↓: Select Item
Active Processor Cores	[All]				Enter: Select
Hyper-Threading	[Enabled]				+/- : Change Opt
Intel Trusted Execution Technology	[Disabled]				F1: General Help
					F2: Previous Values
					F3: Optimized Defaults
					F4: Save & Reset
					ESC: Exit
Version 2.18.1264. Copyright (C) 2017 American Megatrends, Inc.					

Field Name	Type
Default Value	[Intel CPU Brand String]
Comment	This field is not selectable. There is no help text associated with it.

Field Name	ID
Default Value	Displays CPU Signature
Comment	This field is not selectable. There is no help text associated with it.

Field Name	Speed
Default Value	Displays the CPU Speed
Comment	This field is not selectable. There is no help text associated with it.

Field Name	L1 Data Cache
Default Value	L1 Data Cache Size
Comment	This field is not selectable. There is no help text associated with it.

Field Name	L1 Code Cache
Default Value	L1 Code Cache Size
Comment	This field is not selectable. There is no help text associated with it.

Field Name	L2 Cache
Default Value	L2 Cache Size
Comment	This field is not selectable. There is no help text associated with it.

Field Name	L3 Cache
Default Value	L3 Cache Size
Comment	This field is not selectable. There is no help text associated with it.

Field Name	L4 Cache
Default Value	L4 Cache Size
Comment	This field is not selectable. There is no help text associated with it.

Field Name	VMX
Default Value	VMX Supported or Not
Comment	This field is not selectable. There is no help text associated with it.

Field Name	SMX/TXT
Default Value	SMX/TXT Supported or Not
Comment	This field is not selectable. There is no help text associated with it.

Field Name	Hardware Prefetcher
Default Value	[Enabled]
Possible Value	Enabled Disabled
Help	To turn on/off the MLC streamer prefetcher.

Field Name	Adjacent Cache Line Prefetch
Default Value	[Enabled]
Possible Value	Enabled Disabled
Help	To turn on/off the prefetching of adjacent cache lines.

Field Name	Active Processor Cores
Default Value	[All]
Possible Value	All 1
Help	Number of cores to enable in each processor package.

Field Name	Hyper-Threading
Default Value	[Enabled]
Possible Value	Enabled Disabled
Help	Enabled for Windows XP and Linux (OS optimized for Hyper-Threading Technology) and Disabled for other OS (OS not optimized for Hyper-Threading Technology).

Field Name	Intel Trusted Execution Technology
Default Value	[Disabled]
Possible Value	Enabled Disabled
Help	Enables utilization of additional hardware capabilities provided by Intel (R) Trusted Execution Technology. Changes require a full power cycle to take effect.

2.2 TRUSTED COMPUTING (OPTIONAL)

Main	Advanced	Chipset	Security	Boot	Save & Exit
TPM20 Device Found Vender : NTC Firmware Version: 1.3					Item help
Security Device Support [Enable]					→←: Select Screen ↑↓: Select Item Enter: Select +/- : Change Opt F1: General Help F2: Previous Values F3: Optimized Defaults F4: Save & Reset ESC: Exit
Pending operation [None]					
TPM2.0 UEFI Spec Version [TCG_2]					
Version 2.18.1264. Copyright (C) 2017 American Megatrends, Inc.					

Field Name	Security Device SUPPORT
Default Value	[Enable]
Possible Value	Enable Disable
Help	Enables or Disables BIOS support for security device. O.S. will not show Security Device. TCG EFI protocol and INT1A interface will not be available.

Field Name	Pending operation
Default Value	[None]
Possible Value	None TPM Clear
Help	Schedule an Operation for the Security Device. NOTE: Your Computer will reboot during restart in order to change State of Security Device.

Field Name	TPM2.0 UEFI Spec Version
Default Value	[TCG_2]
Possible Value	TCG_1_2 TCG_2
Help	Select the TCG2 Spec Version Support,TCG_1_2: the Compatible mode for Win8/Win10,TCG_2: Support new TCG2 protocol and event format for Win10 or later.

2.3 ACPI SETTINGS

Main	Advanced	Chipset	Security	Boot	Save & Exit
ACPI Settings					Item help
Enable ACPI Auto Configuration [Disabled]					→←-: Select Screen ↑↓: Select Item Enter: Select +/- : Change Opt F1: General Help F2: Previous Values F3: Optimized Defaults F4: Save & Reset ESC: Exit
Enable Hibernation [Enabled]					
ACPI Sleep State [S3 (Suspend to RAM)]					
Version 2.18.1264. Copyright (C) 2017 American Megatrends, Inc.					

Field Name	Enable ACPI Auto Configuration
Default Value	[Disabled]
Possible Value	Enabled Disabled
Help	Enables or Disables BIOS ACPI Auto Configuration.

Field Name	Enable Hibernation
Default Value	[Enabled]
Possible Value	Enabled Disabled
Help	Enables or Disables System ability to Hibernate (OS/S4 Sleep State). This option may be not effective with some OS.

Field Name	ACPI Sleep State
Default Value	[S3 (Suspend to RAM)]
Possible Value	Suspend Disabled S3 (Suspend to RAM)
Help	Select the highest ACPI sleep state the system will enter when the SUSPEND button is pressed.

2.4 SMART SETTINGS

Main	Advanced	Chipset	Security	Boot	Save & Exit
SMART Settings					Item help
SMART Self Test [Disabled]					→←: Select Screen ↑↓: Select Item Enter: Select +/- : Change Opt F1: General Help F2: Previous Values F3: Optimized Defaults F4: Save & Reset ESC: Exit
Version 2.18.1264. Copyright (C) 2017 American Megatrends, Inc.					

Field Name	SMART Self Test
Default Value	[Disabled]
Possible Value	Disabled Enabled
Help	Run SMART Self Test on all HDDs during POST.

2.5 SUPER IO CONFIGURATION

Main	Advanced	Chipset	Security	Boot	Save & Exit
SIO Configuration					Item help
<ul style="list-style-type: none"> ▶ Serial Port 1 Configuration ▶ Serial Port 2 Configuration ▶ Serial Port 3 Configuration ▶ Serial Port 4 Configuration 					<p>→←: Select Screen</p> <p>↑↓: Select Item</p> <p>Enter: Select</p> <p>+/- : Change Opt</p> <p>F1: General Help</p> <p>F2: Previous Values</p> <p>F3: Optimized Defaults</p> <p>F4: Save & Reset</p> <p>ESC: Exit</p>
Version 2.18.1264. Copyright (C) 2017 American Megatrends, Inc.					

Field Name	Serial Port 1 Configuration
Help	Set Parameters of Port 1 (COMA)
Comment	Press Enter when selected to go into the associated Sub-Menu.

Field Name	Serial Port 2 Configuration
Help	Set Parameters of Port 2 (COMB)
Comment	Press Enter when selected to go into the associated Sub-Menu.

Field Name	Serial Port 3 Configuration
Help	Set Parameters of Port 3 (COMC)
Comment	Press Enter when selected to go into the associated Sub-Menu.

Field Name	Serial Port 4 Configuration
Help	Set Parameters of Port 4 (COMD)
Comment	Press Enter when selected to go into the associated Sub-Menu.

2.5.1 Serial Port 1 Configuration

Main	Advanced	Chipset	Security	Boot	Save & Exit
Serial Port 1 Configuration					Item help
Serial Port				[Enabled]	→←: Select Screen ↑ ↓ : Select Item Enter: Select +/- : Change Opt F1: General Help F2: Previous Values F3: Optimized Defaults F4: Save & Reset ESC: Exit
Device Settings				IO=3E8h; IRQ=7;	
Change Settings				[Auto]	
Version 2.18.1264. Copyright (C) 2017 American Megatrends, Inc.					

Field Name	Serial Port
Default Value	[Enabled]
Possible Value	Disabled Enabled
Help	Enable or Disable Serial Port(COM)

Field Name	Device Settings
Default Value	Device Super IO COM1 Address and IRQ.
Comment	This field is not selectable. There is no help text associated with it.

Field Name	Change Settings
Default Value	[Auto]
Possible Value	Auto IO=3E8h; IRQ=7; IO=3E8h; IRQ=3,4,5,6,7,9,10,11,12; IO=2E8h; IRQ=3,4,5,6,7,9,10,11,12; IO=2F0h; IRQ=3,4,5,6,7,9,10,11,12; IO=2E0h; IRQ=3,4,5,6,7,9,10,11,12;
Help	Select an optimal settings for Super IO Device

2.5.2 Serial Port 2 Configuration

Main	Advanced	Chipset	Security	Boot	Save & Exit
Serial Port 2 Configuration					Item help
Serial Port				[Enabled]	→←: Select Screen ↑ ↓ : Select Item Enter: Select +/- : Change Opt F1: General Help F2: Previous Values F3: Optimized Defaults F4: Save & Reset ESC: Exit
Device Settings				IO=2E8h; IRQ=5;	
Change Settings				[Auto]	
Mode Configuration				[3T/5R RS232]	
Version 2.18.1264. Copyright (C) 2017 American Megatrends, Inc.					

Field Name	Serial Port
Default Value	[Enabled]
Possible Value	Disabled Enabled
Help	Enable or Disable Serial Port(COM)

Field Name	Device Settings
Default Value	Device Super IO COM2 Address and IRQ.
Comment	This field is not selectable. There is no help text associated with it.

Field Name	Change Settings
Default Value	[Auto]
Possible Value	Auto IO=2E8h; IRQ=7; IO=3E8h; IRQ=3,4,5,6,7,9,10,11,12; IO=2E8h; IRQ=3,4,5,6,7,9,10,11,12; IO=2F0h; IRQ=3,4,5,6,7,9,10,11,12; IO=2E0h; IRQ=3,4,5,6,7,9,10,11,12;
Help	Select an optimal settings for Super IO Device

Field Name	Mode Configuration
Default Value	[3T/5R RS232]
Possible Value	1T/1R RS422 3T/5R RS232 1T/1R RS485 TX ENABLE Low Active 1T/1R RS422 with termination resistor 1T/1R RS485 with termination resistor TX ENABLE Low Active Disabled
Help	Configure serial port as RS232/RS422/RS485.

2.5.3 Serial Port 3 Configuration

Main	Advanced	Chipset	Security	Boot	Save & Exit
Serial Port 3 Configuration					Item help
Serial Port				[Enabled]	→←: Select Screen ↑ ↓ : Select Item Enter: Select +/- : Change Opt F1: General Help F2: Previous Values F3: Optimized Defaults F4: Save & Reset ESC: Exit
Device Settings				IO=3F8h; IRQ=4;	
Change Settings				[Auto]	
Version 2.18.1264. Copyright (C) 2017 American Megatrends, Inc.					

Field Name	Serial Port
Default Value	[Enabled]
Possible Value	Disabled Enabled
Help	Enable or Disable Serial Port(COM)

Field Name	Device Settings
Default Value	Device Super IO COM3 Address and IRQ.
Comment	This field is not selectable. There is no help text associated with it.

Field Name	Change Settings
Default Value	[Auto]
Possible Value	Auto IO=3F8h; IRQ=4; IO=3F8h; IRQ=3,4,5,6,7,9,10,11,12; IO=2F8h; IRQ=3,4,5,6,7,9,10,11,12; IO=3E8h; IRQ=3,4,5,6,7,9,10,11,12; IO=2E8h; IRQ=3,4,5,6,7,9,10,11,12;
Help	Select an optimal settings for Super IO Device

2.5.4 Serial Port 4 Configuration

Main	Advanced	Chipset	Security	Boot	Save & Exit
Serial Port 4 Configuration					Item help
Serial Port				[Enabled]	→←: Select Screen ↑ ↓ : Select Item Enter: Select +/- : Change Opt F1: General Help F2: Previous Values F3: Optimized Defaults F4: Save & Reset ESC: Exit
Device Settings				IO=2F8h; IRQ=3;	
Change Settings				[Auto]	
Version 2.18.1264. Copyright (C) 2017 American Megatrends, Inc.					

Field Name	Serial Port
Default Value	[Enabled]
Possible Value	Disabled Enabled
Help	Enable or Disable Serial Port(COM)

Field Name	Device Settings
Default Value	Device Super IO COM4 Address and IRQ.
Comment	This field is not selectable. There is no help text associated with it.

Field Name	Change Settings
Default Value	[Auto]
Possible Value	Auto IO=2F8h; IRQ=3; IO=3F8h; IRQ=3,4,5,6,7,9,10,11,12; IO=2F8h; IRQ=3,4,5,6,7,9,10,11,12; IO=3E8h; IRQ=3,4,5,6,7,9,10,11,12; IO=2E8h; IRQ=3,4,5,6,7,9,10,11,12;
Help	Select an optimal settings for Super IO Device

2.6 HARDWARE MONITOR

Main	Advanced	Chipset	Security	Boot	Save & Exit
PC Health Status					Item help
CPU temperature				: xx °C	→←: Select Screen
CPU VR temperature				: xx °C	↑↓: Select Item
DIMM temperature				: xx °C	Enter: Select
Fan Speed				: xxxx RPM	+/- : Change Opt
1V StandBy				: x.xxx V	F1: General Help
CPU Vcore				: x.xxx V	F2: Previous Values
System Memory				: x.xxx V	F3: Optimized Defaults
+12V StandBy				: x.xxx V	F4: Save & Reset
					ESC: Exit
Version 2.18.1264. Copyright (C) 2017 American Megatrends, Inc.					

2.7 S5 RTC WAKE SETTINGS(NO FUNCTION WHEN DEEPSX POWER POLICIES ENABLED)

Main	Advanced	Chipset	Security	Boot	Save & Exit	Item help
Wake system from S5				[Disabled]		
Wake up hour				0		
Wake up minute				0		
Wake up second				0		
						→←: Select Screen ↑↓: Select Item Enter: Select +/- : Change Opt F1: General Help F2: Previous Values F3: Optimized Defaults F4: Save & Reset ESC: Exit
Version 2.18.1264. Copyright (C) 2017 American Megatrends, Inc.						

Field Name	Wake system from S5
Default Value	[Disabled]
Possible Value	Disabled Fixed Time
Help	Enabler or disable System wake on alarm event, Select FixedTime, system will wake on the hr::min::sec specified.

Field Name	Wake up hour(Show when Wake system from S5 set to Fixed Time)
Default Value	0
Possible Value	0-23
Help	Select 0-23 For example enter 3 for 3am and 15 for 3pm

Field Name	Wake up minute(Show when Wake system from S5 set to Fixed Time)
Default Value	0
Possible Value	0-59
Help	0 - 59

Field Name	Wake up second(Show when Wake system from S5 set to Fixed Time)
------------	---

Default Value	0
Possible Value	0 - 59
Help	0 - 59

2.8 NETWORK STACK CONFIGURATION

Main	Advanced	Chipset	Security	Boot	Save & Exit
					Item help
Network stack					[Disabled]
Ipv4 PXE Support					[Disabled]
Ipv6 PXE Support					[Disabled]
					→←: Select Screen ↑↓: Select Item Enter: Select +/- : Change Opt F1: General Help F2: Previous Values F3: Optimized Defaults F4: Save & Reset ESC: Exit
Version 2.18.1264. Copyright (C) 2017 American Megatrends, Inc.					

Field Name	Network stack
Default Value	[Disabled]
Possible Value	Disabled (Restore non-Windows 8 Default) Enabled
Help	Enable/Disable UEFI Network stack.

Field Name	Ipv4 PXE Support
Default Value	[Disabled]
Possible Value	Disabled Enabled
Help	Enable Ipv4 PXE Boot Support. If disabled IPV4 PXE boot option will not be created.

Field Name	Ipv6 PXE Support
Default Value	[Disabled]
Possible Value	Disabled Enabled
Help	Enable Ipv6 PXE Boot Support. If disabled IPV6 PXE boot option will not be created.

3. CHIPSET PAGE

Main	Advanced	Chipset	Security	Boot	Save & Exit
<ul style="list-style-type: none"> ▶ System Agent (SA) Configuration ▶ PCH-IO Configuration 					Item help
					→←-: Select Screen ↑↓: Select Item Enter: Select +/- : Change Opt F1: General Help F2: Previous Values F3: Optimized Defaults F4: Save & Reset ESC: Exit
Version 2.18.1264. Copyright (C) 2017 American Megatrends, Inc.					

Field Name	System Agent (SA) Configuration
Help	System Agent (SA) Parameters
Comment	Press Enter when selected to go into the associated Sub-Menu.

Field Name	PCH-IO Configuration
Help	PCH Parameters
Comment	Press Enter when selected to go into the associated Sub-Menu.

3.1 SYSTEM AGENT (SA) CONFIGURATION

Main	Advanced	Chipset	Security	Boot	Save & Exit
System Agent (SA) Configuration					Item help
<ul style="list-style-type: none"> ▶ Memory Configuration ▶ Graphics Configuration 					→←-: Select Screen ↑↓: Select Item Enter : Select +/- : Change Opt F1 : General Help F2 : Previous Values F3 : Optimized Defaults F4 : Save & Reset ESC : Exit
Version 2.18.1264. Copyright (C) 2017 American Megatrends, Inc.					

Field Name	Memory Configuration
Help	Memory Configuration Parameters
Comment	Press Enter when selected to go into the associated Sub-Menu.

Field Name	Graphics Configuration
Help	Graphics Configuration
Comment	Press Enter when selected to go into the associated Sub-Menu.

3.1.1 Memory Configuration

Main	Advanced	Chipset	Boot	Security	Save & Exit
Memory Configuration					Item help
Memory Frequency				2133 Mhz	→←: Select Screen
DIMM#1				16384 MB (DDR4)	↑↓: Select Item
DIMM#2				16384 MB (DDR4)	Enter: Select
					+/- : Change Opt
					F1: General Help
					F2: Previous Values
					F3: Optimized Defaults
					F4: Save & Reset
					ESC: Exit
Version 2.18.1264. Copyright (C) 2017 American Megatrends, Inc.					

Field Name	Memory Frequency
Help	Memory speed
Comment	This field is not selectable. There is no help text associated with it.

Field Name	DIMM#[1:2]
Help	Memory in the DIMM.
Comment	This field is not selectable. There is no help text associated with it.

3.1.2 Graphics Configuration

Main	Advanced	Chipset	Security	Boot	Save & Exit
Graphics Configuration					Item help
DVMT Pre-Allocated [32M]					→←: Select Screen ↑↓: Select Item Enter: Select +/- : Change Opt F1: General Help F2: Previous Values F3: Optimized Defaults F4: Save & Reset ESC: Exit
DVMT Total Gfx Mem [256M]					
Version 2.18.1264. Copyright (C) 2017 American Megatrends, Inc.					

Field Name	DVMT Pre-Allocated
Default Value	[32M]
Possible Value	32M / 64M / 4M/ 8M/ 12M/ 16M/ 20M/ 24M/ 28M/ (32M/F7)/ 36M/ 40M/ 44M/ 48M/ 52M/ 56M/ 60M
Help	Select DVMT 5.0 Pre-Allocated (Fixed) Graphics Memory size used by the Internal Graphics Device.

Field Name	DVMT Total Gfx Mem
Default Value	[256M]
Possible Value	128MB / 256MB / MAX
Help	Select DVMT5.0 Total Graphic Memory size used by the Internal Graphics Device.

3.2 PCH-IO CONFIGURATION

Main	Advanced	Chipset	Security	Boot	Save & Exit
PCH-IO Configuration					Item help
▶ HD Audio Configuration					→←: Select Screen
DeepSx Power Policies [Disabled]					↑↓: Select Item
Wake On LAN [Enabled]					Enter: Select
State After G3 [S5 State]					+/- : Change Opt
					F1: General Help
					F2: Previous Values
					F3: Optimized Defaults
					F4: Save & Reset
					ESC: Exit
Version 2.18.1264. Copyright (C) 2017 American Megatrends, Inc.					

Field Name	HD Audio Configuration
Help	HD Audio Subsystem Configuration Settings
Comment	Press Enter when selected to go into the associated Sub-Menu.

Field Name	DeepSx Power Policies
Default Value	[Disabled]
Possible Value	Enabled in S4-S5 Disabled
Help	configure the DeepSx Mode configuration.

Field Name	Wake On LAN
Default Value	[Enabled]
Possible Value	Enabled Disabled
Help	Enabled/Disabled integrated LAN to wake the system.

Field Name	State After G3
Default Value	[S5 State]
Possible Value	S0 State S5 State
Help	Specify what state to go to when power is re-applied after a power failure (G3 state).

3.2.1 HD Audio Configuration

Main	Advanced	Chipset	Boot	Security	Save & Exit
HD Audio Subsystem Configuration Settings					Item help
HD Audio [Auto]					→←: Select Screen ↑↓: Select Item Enter: Select +/- : Change Opt F1: General Help F2: Previous Values F3: Optimized Defaults F4: Save & Reset ESC: Exit
Version 2.18.1264. Copyright (C) 2017 American Megatrends, Inc.					

Field Name	HD Audio
Value	[Auto]
Possible Value	Auto / Enable / Disable
Help	Control Detection of HD-Audio device. Disabled = HDA will be unconditionally disabled Enable = HDA will be unconditionally enabled Auto = HDA will be enabled if present, disabled otherwise.

4. SECURITY PAGE

Main	Advanced	Chipset	Security	Boot	Save & Exit				
<p>Password Description</p> <p>If Only the Administrator's password is set, then this only limits access to Setup and is only asked for when entering Setup.</p> <p>If ONLY the User's password is set, then this is a power on password and must be entered to boot or enter Setup. In Setup the User will have Administrator rights..</p> <p>The password length must be in the following range:</p> <table> <tr> <td>Minimum length</td> <td>3</td> </tr> <tr> <td>Maximum length</td> <td>20</td> </tr> </table> <p>Administrator Password</p> <p>User Password</p> <p>HDD Security Configuration:</p> <p>HDD Security drive</p> <p>▶ Secure Boot</p>					Minimum length	3	Maximum length	20	<p>Item help</p>
Minimum length	3								
Maximum length	20								
					<p>→←: Select Screen</p> <p>↑↓: Select Item</p> <p>Enter: Select</p> <p>+/- : Change Opt</p> <p>F1: General Help</p> <p>F2: Previous Values</p> <p>F3: Optimized Defaults</p> <p>F4: Save & Reset</p> <p>ESC: Exit</p>				
Version 2.18.1264. Copyright (C) 2017 American Megatrends, Inc.									

Field Name	Administrator Password
Help	Set Administrator Password

Field Name	User Password
Help	Set User Password.

Field Name	HDD Security drive
Help	HDD Security Configuration for selected drive
Comment	Press Enter when selected to go into the associated Sub-Menu.

Field Name	Secure Boot
Help	Customizable Secure Boot settings
Comment	Press Enter when selected to go into the associated Sub-Menu.

4.1 HDD SECURITY

Main	Advanced	Chipset	Security	Boot	Save & Exit
<p>HDD Password Description :</p> <p>Allows Access to Set, Modify and Clear HardDisk User and Master Passwords. User Password need to be installed for Enabling Security. Master Password can be Modified only when successfully unlocked with Master Password in POST.</p> <p>If the 'Set HDD Password' option is grayed out, do power cycle to enable the option again.</p> <p>HDD PASSWORD CONFIGURATION:</p> <p>Security Supported : Yes</p> <p>Security Enabled : No</p> <p>Security Locked : No</p> <p>Security Frozen : No</p> <p>HDD User Pwd Status : NOT INSTALLED</p> <p>HDD Master Pwd Status : INSTALLED</p> <p>Set User Password</p>					<p>Item help</p>
					<p>→←: Select Screen</p> <p>↑↓: Select Item</p> <p>Enter: Select</p> <p>+/- : Change Opt</p> <p>F1: General Help</p> <p>F2: Previous Values</p> <p>F3: Optimized Defaults</p> <p>F4: Save & Reset</p> <p>ESC: Exit</p>
Version 2.18.1264. Copyright (C) 2017 American Megatrends, Inc.					

Field Name	Set User Password
Help	Set HDD User Password. *** Advisable to Power Cycle System after Setting Hard Disk Passwords ***.Discard or Save changes option in setup does not have any impact on HDD when password is set or removed. If the 'Set HDD User Password' option is grayed out, do power cycle to enable the option again

4.2 SECURE BOOT

Main	Advanced	Chipset	Security	Boot	Save & Exit	Item	help
System Mode				Setup			
Secure Boot				Not Active			→←: Select Screen
Vendor Keys				Active			↑↓: Select Item
Attempt Secure Boot				[Disabled]			Enter: Select
Secure Boot Mode				[Custom]			+/- : Change Opt
▶ Key Management							F1: General Help
							F2: Previous Values
							F3: Optimized Defaults
							F4: Save & Reset
							ESC: Exit
Version 2.18.1264. Copyright (C) 2017 American Megatrends, Inc.							

Field Name	Attempt Secure Boot
Default Value	[Disabled]
Possible Value	Enabled Disabled
Help	Secure Boot activated when Platform Key (PK) is enrolled, System mode is User/Deployed, and CSM function is disabled.

Field Name	Secure Boot Mode
Default Value	[Custom]
Possible Value	Standard Custom
Help	Secure Boot mode selector: Standard/Custom. In Custom Mode Secure Boot Variables can be configured without authentication.

Field Name	Key Management
Help	Enables expert users to modify Secure Boot Policy variables without full authentication
Comment	Press Enter when selected to go into the associated Sub-Menu.

4.2.1 Key Management

Main	Advanced	Chipset	Security	Boot	Save & Exit
Provision Factory Defaults [Disabled]					Item help
<ul style="list-style-type: none"> ▶ Install Factory Default Keys ▶ Enroll Efi Image ▶ Save All Secure Boot Variables 					→←: Select Screen ↑↓: Select Item Enter: Select +/- : Change Opt. F1: General Help F2: Previous Values F3: Optimized Defaults F4: Save & Reset ESC: Exit
Secure Boot variable	Size	Key#	Key Source		
▶ Platform Key(PK)	0	0	No Key		
▶ Key Exchange Key	0	0	No Key		
▶ Authorized Signatures	0	0	No Key		
▶ Forbidden Signatures	0	0	No Key		
▶ Authorized TimeStamps	0	0	No Key		
▶ OsRecovery Signatures	0	0	No Key		
Version 2.18.1264. Copyright (C) 2017 American Megatrends, Inc.					

Field Name	Provision Factory Defaults
Default Value	[Disabled]
Possible Value	Enabled Disabled
Help	Allow to provision factory default Secure Boot keys when System is in Setup Mode

Field Name	Install Factory Default Keys
Help	Force System to User Mode - install all Factory Default keys
Comment	

Field Name	Enroll Efi Image
Help	Allow the image to run in Secure Boot mode. Enroll SHA256 hash of the binary into Authorized Signature Database (db)
Comment	

Field Name	Save All Secure Boot Variables
Help	Save NVRAM content of Secure Boot policy variables to the files (EFI_SIGNATURE_LIST data format) in root folder on a target file system device
Comment	

Field Name	Platform Key (PK)
Default Value	Size:0, Key#:0, Key source: No Key
Help	Enroll Factory Defaults or load certificates from a file: 1.Public Key Certificate in: a)EFI_SIGNATURE_LIST

	b)EFI_CERT_X509 (DER encoded) c)EFI_CERT_RSA2048 (bin) d)EFI_CERT_SHA256,384,512 2.Authenticated UEFI Variable 3.EFI PE/COFF Image(SHA256) Key Source: Default,External,Mixed,Test
comment	Press Enter when selected to go into the associated Sub-Menu “Key Management”.

Field Name	Key Exchange Key
Default Value	Size:0, Key#:0, Key source: No Key
Help	Enroll Factory Defaults or load certificates from a file: 1.Public Key Certificate in: a)EFI_SIGNATURE_LIST b)EFI_CERT_X509 (DER encoded) c)EFI_CERT_RSA2048 (bin) d)EFI_CERT_SHA256,384,512 2.Authenticated UEFI Variable 3.EFI PE/COFF Image(SHA256) Key Source: Default,External,Mixed,Test
comment	Press Enter when selected to go into the associated Sub-Menu.

Field Name	Authorized Signature
Default Value	Size:0, Key#:0, Key source: No Key
Help	Enroll Factory Defaults or load certificates from a file: 1.Public Key Certificate in: a)EFI_SIGNATURE_LIST b)EFI_CERT_X509 (DER encoded) c)EFI_CERT_RSA2048 (bin) d)EFI_CERT_SHA256,384,512 2.Authenticated UEFI Variable 3.EFI PE/COFF Image(SHA256) Key Source: Default,External,Mixed,Test
comment	Press Enter when selected to go into the associated Sub-Menu.

Field Name	Forbidden Signature
Default Value	Size:0, Key#:0, Key source: No Key
Help	Enroll Factory Defaults or load certificates from a file: 1.Public Key Certificate in: a)EFI_SIGNATURE_LIST b)EFI_CERT_X509 (DER encoded) c)EFI_CERT_RSA2048 (bin) d)EFI_CERT_SHA256,384,512 2.Authenticated UEFI Variable 3.EFI PE/COFF Image(SHA256) Key Source: Default,External,Mixed,Test
comment	Press Enter when selected to go into the associated Sub-Menu.

Field Name	Authorized TimeStamps
Default Value	Size:0, Key#:0, Key source: No Key
Help	Enroll Factory Defaults or load certificates from a file: 1.Public Key Certificate in:

	a)EFI_SIGNATURE_LIST b)EFI_CERT_X509 (DER encoded) c)EFI_CERT_RSA2048 (bin) d)EFI_CERT_SHA256,384,512 2.Authenticated UEFI Variable 3.EFI PE/COFF Image(SHA256) Key Source: Default,External,Mixed,Test
comment	Press Enter when selected to go into the associated Sub-Menu.

Field Name	OsRecovery Signatures
Default Value	Size:0, Key#:0, Key source: No Key
Help	Enroll Factory Defaults or load certificates from a file: 1.Public Key Certificate in: a)EFI_SIGNATURE_LIST b)EFI_CERT_X509 (DER encoded) c)EFI_CERT_RSA2048 (bin) d)EFI_CERT_SHA256,384,512 2.Authenticated UEFI Variable 3.EFI PE/COFF Image(SHA256) Key Source: Default,External,Mixed,Test
comment	Press Enter when selected to go into the associated Sub-Menu.

5. BOOT PAGE

Main	Advanced	Chipset	Security	Boot	Save & Exit
Boot Configuration					Item help
Setup Prompt Timeout					1
Bootup NumLock State					[On]
Boot Mode Select					[UEFI]
FIXED BOOT ORDER Priorities					→←: Select Screen
Boot Option #1					[USB Floppy]
Boot Option #2					[USB CD/DVD]
Boot Option #3					[Hard Disk]
Boot Option #4					[USB Key]
Boot Option #5					[USB Hard Disk]
Boot Option #6					[USB Lan]
Boot Option #7					[Network]
▶ (UEFI) USB Floppy Drive BBS Priorities					↑↓: Select Item
▶ (UEFI) USB CD/DVD Drive BBS Priorities					Enter: Select
▶ (UEFI) Hard Disk Drive BBS Priorities					+/- : Change Opt.
▶ (UEFI) USB Key Drive BBS Priorities					F1: General Help
▶ (UEFI) USB Hard Disk Drive BBS Priorities					F2: Previous Values
▶ (UEFI) USB Lan Drive BBS Priorities					F3: Optimized Defaults
▶ (UEFI) Network Drive BBS Priorities					F4: Save & Reset
					ESC: Exit
Version 2.18.1264. Copyright (C) 2017 American Megatrends, Inc.					

Field Name	Setup Prompt Timeout
Default Value	1
Possible Value	1~65535
Help	Number of seconds to wait for setup activation key. 65535(0xFFFF) means indefinite waiting.

Field Name	Bootup NumLock State
Default Value	[On]
Possible Value	On Off
Help	Select the keyboard NumLock state

Field Name	Boot Mode Select
------------	-------------------------

Default Value	[UEFI]
Possible Value	LEGACY (Support Skylake series for Win7) UEFI
Help	Select boot mode LEGACY/UEFI

Field Name	Boot Option #1
Default Value	[USB Floppy]
Possible Value	Hard Disk, USB Hard Disk, USB CD/DVD, USB Key, USB Floppy , USB Lan, Network
Help	Sets the system boot order

Field Name	Boot Option #2
Default Value	[USB CD/DVD]
Possible Value	Hard Disk, USB Hard Disk, USB CD/DVD, USB Key, USB Floppy , USB Lan, Network
Help	Sets the system boot order

Field Name	Boot Option #3
Default Value	[Hard Disk]
Possible Value	Hard Disk, USB Hard Disk, USB CD/DVD, USB Key, USB Floppy , USB Lan, Network
Help	Sets the system boot order

Field Name	Boot Option #4
Default Value	[USB Key]
Possible Value	Hard Disk, USB Hard Disk, USB CD/DVD, USB Key, USB Floppy , USB Lan, Network
Help	Sets the system boot order

Field Name	Boot Option #5
Default Value	[USB Hard Disk]
Possible Value	Hard Disk, USB Hard Disk, USB CD/DVD, USB Key, USB Floppy , USB Lan, Network
Help	Sets the system boot order

Field Name	Boot Option #6
Default Value	[USB Lan]
Possible Value	Hard Disk, USB Hard Disk, USB CD/DVD, USB Key, USB Floppy , USB Lan, Network
Help	Sets the system boot order

Field Name	Boot Option #7
Default Value	[Network]
Possible Value	Hard Disk, USB Hard Disk, USB CD/DVD, USB Key, USB Floppy , USB Lan, Network
Help	Sets the system boot order

Field Name	(UEFI) USB Floppy Drive BBS Priorities
Help	Specifies the Boot Device Priority sequence from available USB Floppy Drives.
Comment	Press Enter when selected to go into the associated Sub-Menu.

Field Name	(UEFI) USB CD/DVD ROM Drive BBS Priorities
Help	Specifies the Boot Device Priority sequence from available USB CDROM/DVD Drives.
Comment	Press Enter when selected to go into the associated Sub-Menu.

Field Name	(UEFI) USB Hard Disk Drive BBS Priorities
Help	Specifies the Boot Device Priority sequence from available USB Hard Disk Drives.
Comment	Press Enter when selected to go into the associated Sub-Menu.

Field Name	(UEFI) USB KEY Drive BBS Priorities
Help	Specifies the Boot Device Priority sequence from available USB Key Drives.
Comment	Press Enter when selected to go into the associated Sub-Menu.

Field Name	(UEFI) Hard Disk Drive BBS Priorities
Help	Specifies the Boot Device Priority sequence from available Hard Disk Drives.
Comment	Press Enter when selected to go into the associated Sub-Menu.

Field Name	(UEFI) NETWORK Drive BBS Priorities
Help	Specifies the Boot Device Priority sequence from available NETWORK Drives.
Comment	Press Enter when selected to go into the associated Sub-Menu.

5.1 (LIST BOOT DEVICE TYPE) DRIVE BBS PRIORITIES

Main	Advanced	Chipset	Security	Boot	Save & Exit
Boot Option #1				[Boot Device Name 1]	Item help →←: Select Screen ↑↓: Select Item Enter: Select +/- : Change Opt F1: General Help F2: Previous Values F3: Optimized Defaults F4: Save & Reset ESC: Exit
Boot Option #2				[Boot Device Name 2]	
Version 2.18.1264. Copyright (C) 2017 American Megatrends, Inc.					

Field Name	Boot Option #1
Default Value	
Possible Value	Boot Device Name 1 of this type
Help	Sets the system boot order

Field Name	Boot Option #2
Default Value	
Possible Value	Boot Device Name 2 of this type
Help	Sets the system boot order

6.

7. SAVE & EXIT PAGE

Main	Advanced	Chipset	Security	Boot	Save & Exit	
Save Options Discard Changes and Exit Save Changes and Reset Discard Changes and Reset Restore Defaults						Item help
						→←: Select Screen ↑↓: Select Item Enter: Select +/- : Change Opt F1: General Help F2: Previous Values F3: Optimized Defaults F4: Save & Reset ESC: Exit
Version 2.18.1264. Copyright (C) 2017 American Megatrends, Inc.						

Field Name	Discard Changes and Exit
Help	Exit system setup with without saving any changes.

Field Name	Save Changes and Reset
Help	Reset the system after saving the changes.

Field Name	Discard Changes and Rest
Help	Reset system setup without saving any changes.

Field Name	Restore Defaults
Help	Restore/Load Legacy Default values for all the setup options.